



Undercounter **CUBER**



-DS shown with Custom Cabinetry

AM Cubers with Built-In Bins



AM-50BAJ

14 7/8" W X 22 5/8" D X 33 1/2" H

The ADA compliant machine dimensions are 147/8" W x 225/8" D x 311/2" H

Model	Electrical	Lbs. per 24 hours 90°A / 70°W 70°A / 50°W		kWh per 100 Lbs.	Shipping Weight	List F.O.B. Griffin
AM-50BAJ	115V/60/1	35	51	10.4	97 Lbs.	\$5,470
AM-50BAJ-DS†	115V/60/1	35	51	10.4	97 Lbs.	\$5,570
AM-50BAJ-AD	115V/60/1	34	55	9.9	99 Lbs.	\$5,670
AM-50BAJ-ADDS†	115V/60/1	34	55	9.9	99 Lbs.	\$5,840

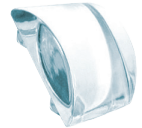


Filter

Self-Contained Bin Storage Capacity Up to 22 Lbs.†



Undercounter KM Cubers with Built-In Bins



KM-81BAJ★

17 3/4" W X 24" D X 39" H (6" Legs Included)



Filter

Electrical	Lbs. per 24 hours 90°A / 70°W 70°A / 50°W		kWh per 100 Lbs.	Shipping Weight	List F.O.B. Griffin
115V/60/1	52	78	8.45	125 Lbs.	\$4,910

Self-Contained Bin Storage Capacity Up to 38 Lbs.†



KM-116BAJ★

23 3/4" W X 24" D X 39" H (6" Legs Included)



Filter

Electrical	Lbs. per 24 hours 90°A / 70°W 70°A / 50°W		kWh per 100 Lbs.	Shipping Weight	List F.O.B. Griffin
115V/60/1	100	125	8.1	146 Lbs.	\$5,540

Self-Contained Bin Storage Capacity Up to 53 Lbs.†

★ Rated in accordance with AHRI Standard 820(I-P). Capacity based on 100% of total volume x 30 lb/ft³ average density of ice.



Undercounter CUBER



Undercounter KM Cubers with Built-In Bins

KM-161B_J 23 3/4"W X 28 1/4"D X 39"H (6" Legs Included)

Model	Electrical	Lbs. per 24 hours 90°A / 70°W 70°A / 50°W		kWh per 100 Lbs.	Shipping Weight	List F.O.B. Griffin
KM-161BAJ	115V/60/1	123	163	8.6	159 Lbs.	\$6,080
KM-161BWJ	115V/60/1	135	153	6.5	163 Lbs.	\$6,410



Filter

Self-Contained Bin Storage Capacity Up to 78 Lbs.†

KM-231BAJ 24"W X 28"D X 39"H (6" Legs Included)

Model	Electrical	Lbs. per 24 hours 90°A / 70°W 70°A / 50°W		kWh per 100 Lbs.	Shipping Weight	List F.O.B. Griffin
KM-231BAJ	115V/60/1	147	213	8.4	165 Lbs.	\$6,580



Filter

Self-Contained Bin Storage Capacity Up to 80 Lbs.†



KM-301B_J 30"W X 28"D X 39"H (6" Legs Included)

Model	Electrical	Lbs. per 24 hours 90°A / 70°W 70°A / 50°W		kWh per 100 Lbs.	Shipping Weight	List F.O.B. Griffin
KM-301BAJ	115V/60/1	212	290	7.1	206 Lbs.	\$7,690
KM-301BWJ	115V/60/1	237	285	4.9	189 Lbs.	\$7,760



Filter

Self-Contained Bin Storage Capacity Up to 100 Lbs.†

†Rated in accordance with AHRI Standard 820(I-P). Capacity based on 100% of total volume x 30 lb/ft³ average density of ice.

